

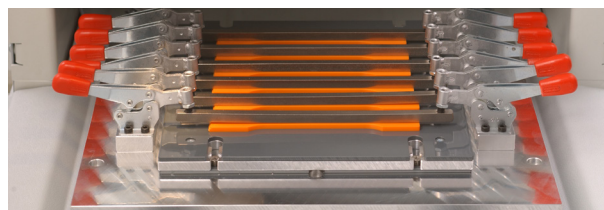
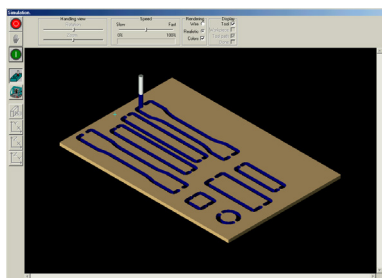
## CNC MILLING MACHINE

### CNC Milling Machine type C4U / C2U

Automatic, microprocessor-controlled CNC specimen milling machine (cutter), for the production of standardized or not standardized specimens.

#### Features / Equipment:

- 3-Axis (X,Y,Z) milling table (T-slot) with a large working area
- Various clampings for plates, semifinished parts, pipes, etc. for the production of standardized specimens are available
- Quick release clamp for the production of notched specimens are available
- User friendly 2 or 3D-Software (CAD/CAM software) for the programming and controlling of the milling procedure



#### Technical data:

	C4U	C4U-HF	C2U	C2U-HF
Article Number	2110.000	2120.000	2210.000	2220.000
<b>Dimensions</b>				
Width [mm]	620		985	
Height [mm]	730		1070	
Depth [mm]	850		1300	
Weight [kg]	81		170	
Distance in X [mm]	310		600	
Distance in Y [mm]	220		420	
Distance in Z [mm]	160		280	
Table size [mm]	375x320		640x680	
Clear width between d. Columns [mm]	450		810	
Clear width under traverse [mm]	115		250	
Clear width under spindle [mm]	165		285	
<b>Characteristics</b>				
Max. Feed speed [mm / s]	100		100	
Max. Infeed speed [mm / s]	100		100	
Torque standard motor [Ncm]	90		90	
Power standard spindel [W]	800	-	800	-
Power HF-spindel [W]	-	1100	-	1100
Rotational speed (adjustable) [Upm]	8000...24000	6000...24000	8000...24000	6000...24000
<b>Electrical data</b>				
Mains connection [V] / [Hz]	230 / 50-60		230 / 50-60	
Power [W]	850	1150	850	1150